

for Benjamin Whittenburg

An Opening Piece

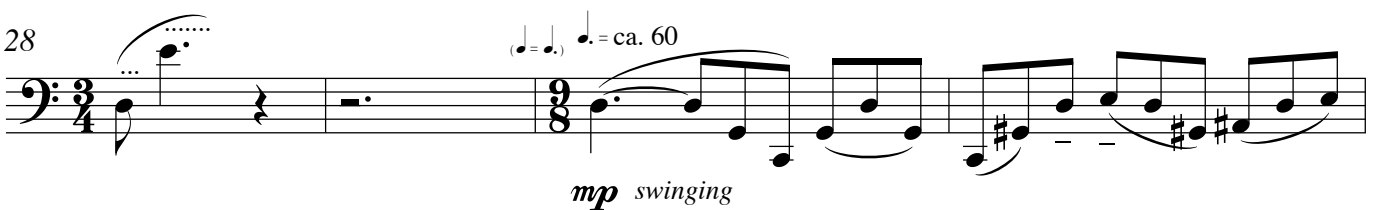
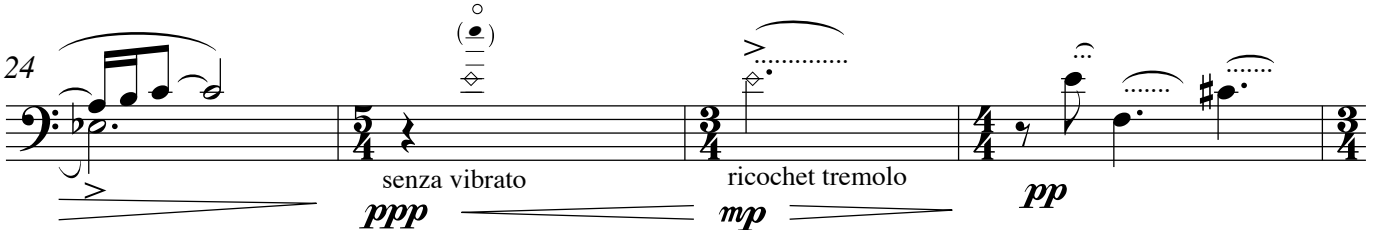
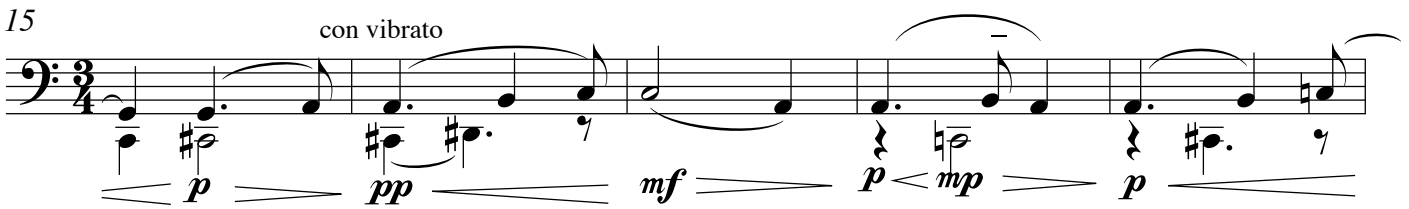
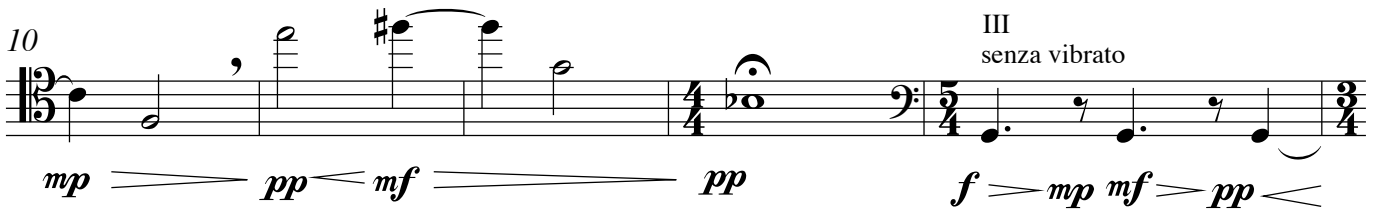
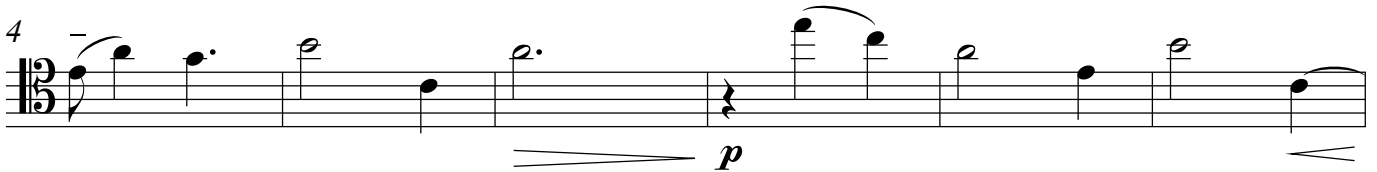
Roger Zahab
(1984)

for 'cello

♩ = ca. 60



con vibrato **f** *passionato*



32

35

f *p* poco a poco cresc.

38

(cresc) *f* *ff*

41

mp *mf* *p* pizz. senza vibrato
p clear and ringing

44

mf *pp* *mf*

8. - 22. Feb. 1984 NYC
ca. 2 and a half minutes