

for Monique Gusset

Duncan's Cove

Roger Zahab
(1981)

piano

The first system of handwritten musical notation consists of two staves. The upper staff is in treble clef and contains a melodic line with a sharp sign (#) above the first measure and a flat sign (b) above the second measure. The lower staff is in bass clef and contains a bass line with a sharp sign (#) above the first measure and a flat sign (b) above the second measure. The music concludes with a final chord in the upper staff marked with a sharp sign (#) and a flat sign (b).

The second system of handwritten musical notation consists of two staves. The upper staff is in treble clef and contains a melodic line with a sharp sign (#) above the first measure and a flat sign (b) above the second measure. The lower staff is in bass clef and contains a bass line with a sharp sign (#) above the first measure and a flat sign (b) above the second measure. The music concludes with a final chord in the upper staff marked with a sharp sign (#) and a flat sign (b).

The third system of handwritten musical notation consists of two staves. The upper staff is in treble clef and contains a melodic line with a sharp sign (#) above the first measure and a flat sign (b) above the second measure. The lower staff is in bass clef and contains a bass line with a sharp sign (#) above the first measure and a flat sign (b) above the second measure. The music concludes with a final chord in the upper staff marked with a sharp sign (#) and a flat sign (b).

The fourth system of handwritten musical notation consists of two staves. The upper staff is in treble clef and contains a melodic line with a sharp sign (#) above the first measure and a flat sign (b) above the second measure. The lower staff is in bass clef and contains a bass line with a sharp sign (#) above the first measure and a flat sign (b) above the second measure. The music concludes with a final chord in the upper staff marked with a sharp sign (#) and a flat sign (b).

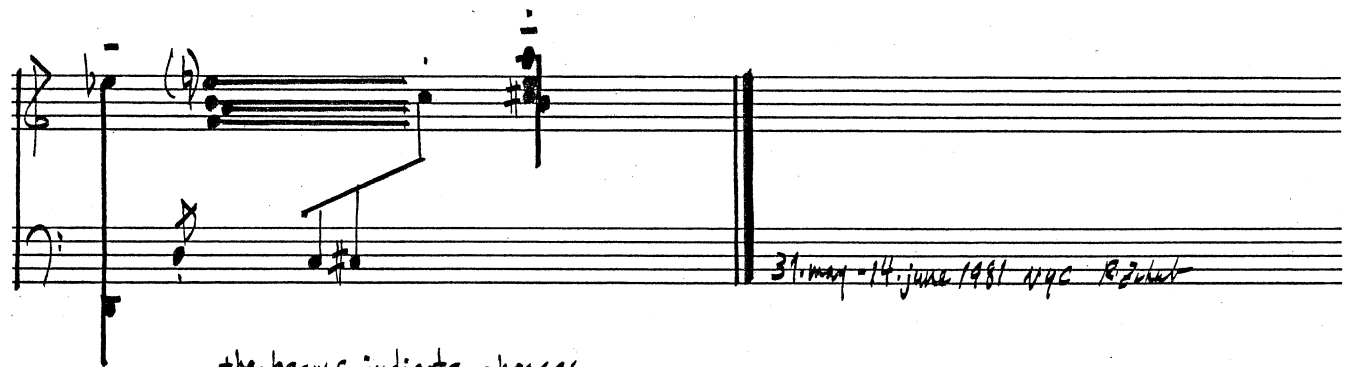
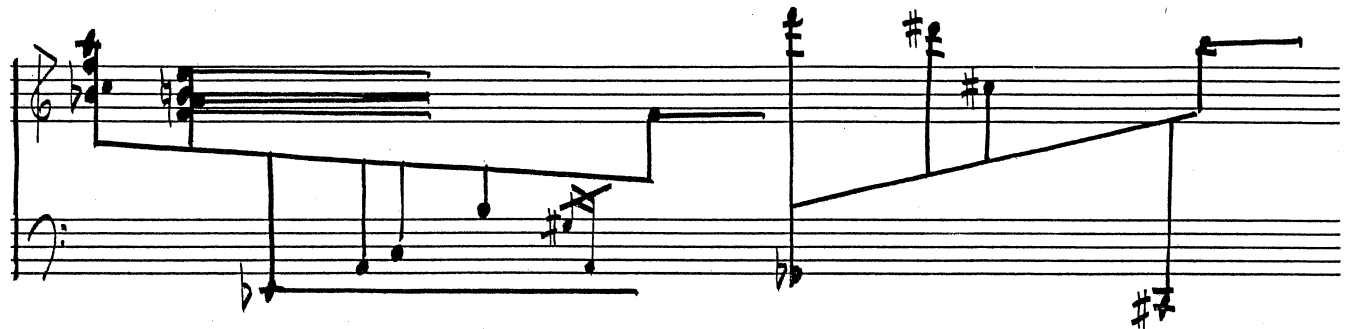
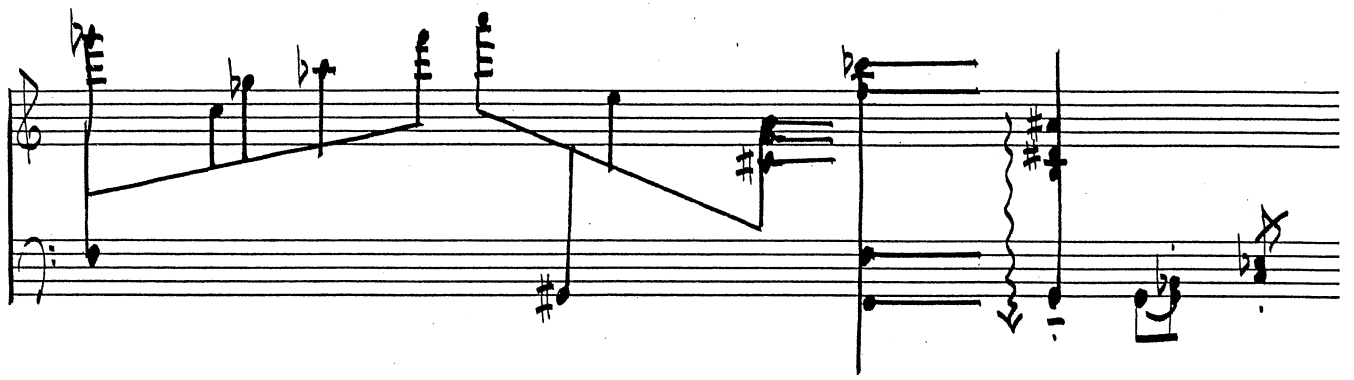
Handwritten musical notation for the first system. The treble staff contains notes with sharp accidentals (#) and a final chord with a double sharp (##). The bass staff contains notes with sharp accidentals (#) and a final chord with a double sharp (##).

Handwritten musical notation for the second system. The treble staff contains notes with flat (b) and sharp (#) accidentals. The bass staff contains notes with sharp (#) and flat (b) accidentals.

Handwritten musical notation for the third system. The treble staff contains notes with sharp (#) and flat (b) accidentals. The bass staff contains notes with sharp (#) and flat (b) accidentals. There are some scribbles and a wavy line in the treble staff towards the end of the system.

Handwritten musical notation for the fourth system. The treble staff contains notes with sharp (#) and flat (b) accidentals. The bass staff contains notes with sharp (#) and flat (b) accidentals.

Zahab: Duncan's Cove 2



- . the beams indicate phrases
- . space equals time (duration) and the pace should be kept consistently throughout
- . the dynamics are left to the discretion and taste of the performer.
- . let the silences have their chance.
- . the pedals should be used only when absolutely necessary; a dry, light touch is preferred.
- . accidentals apply only to the note they immediately precede.

Zakab: Duncan's Cove 3